



Cooperative Connections

**An Eye on the
Sky: Weather
Spotters
Play a Role**

Page 8

**Rollin' in
the Fun at
Wheel Jam**

Page 12

Lacreek Electric Association, Inc.

2018 Annual Report

**Josh Fanning**

Interim General Manager
josh@lacreek.com

**Tom Schlack**

LEA Board President

**Lacreek
continues
to do
day-to-day
work
maintaining
the lines to
provide safe
reliable power.**

We would like to welcome our members to the 71st Lacreek Electric annual meeting. As always, our goal at Lacreek Electric Association Inc. is to serve our members as best we can in today's environmental/technology-driven world and to be able to provide our members with safe, affordable and reliable energy. We feel strongly that our responsibility to the membership is to continually improve our community's energy infrastructure and implement new technologies as we strive to maximize the efficiency of our operation.

Through the planning and foresight of your board of directors and management, a tremendous amount of hard work from your employees and the support of the members, Lacreek showed operating margins of \$135,889, non-operating margins of \$383,705 and G&T margins of \$1,184,640. Our margins appear to be very high ending 2018. This is due to a large allocation of generation and transmission "G&T" capital credits in the amount of \$1,184,640. These will be paid to us in the future, however, it is not dollars available at this time. To give you an example, in 2018 we received a retirement of the generation and transmission capital credits from a portion of both years 1997 and 2001.

In 2018, we paid out \$107,592 in co-op capital credits, \$156,415 in G&T capital credits, and \$96,480 in estates. This month, we mailed capital credit checks for a total of \$339,435 for the years 1992 and 2000 and we allocated the 2018 co-op capital credits in the amount of \$135,889 and the G&T capital credits in the amount of \$1,184,640. We continue to work hard to provide you with safe, reliable and affordable electricity through long-term investments and sound business practices.

Lacreek's board of directors were able to hold off any rate increase in 2018; however, due to the cost of updating our aging infrastructure and the increasing cost of operations/maintenance, there was a board-approved rate increase which took effect Jan. 1, 2019. The board and management continue to look at different ways to hold costs down and still provide safe reliable service to you, our members.

LEA has upgraded our aging plant by more than \$11.5 million in the past five years and currently has a four-year work plan with an additional \$12 million for upgrades and system improvements. These upgrades and system improvements will provide our membership a more reliable electric delivery system.

Lacreek was busy in 2018 completing several projects. We energized the new 115kv Wanblee Tap and Substation that was started in 2013 and is now completed after a lot of hard work from various personnel. This substation was updated to increase the reliability in the Wanblee and surrounding areas which proved beneficial with minimal outages during the "Ulmer" storm in February 2019. We also added a 27-mile high-capacity underground feeder system to replace the aging overhead transmission line that feeds from Wanblee to Norris, which will be completed by the end of 2019. A new, large power member-grain elevator west of town was established which will be an asset to the ag community. Goldenwest kept the crews busy for several months doing locates for the new fiber optics that were installed for the City of Martin. Summer thunderstorms/high winds/hail/tornadoes hit hard in our western territory resulting in damage to not only our equipment, but to our members' homes. This storm kept the line crews busy replacing broken meters, security lights and poles but, more importantly, we felt for our members' devastation to their homes during these horrific storms. Ram Utilities out of Moorhead, Minn., was brought in to do pole testing in our southern territory and they will be back to continue pole testing in 2019. Asplundh Tree Service worked in the Porcupine and Manderson area clearing tree lines from our power lines and will continue in 2019. Lacreek continues to do day-to-day work maintaining the lines to provide safe reliable power.

Thanks again to all the Lacreek employees for their hard work and the membership for their continued patience and support. 652000601

The board, management and employees are dedicated to working each day to provide you with safe, reliable and affordable electricity to your homes, farms and businesses. Thank you for your support.

Lacreek Electric

Cooperative Connections

(USPS No. 018-912)

Board of Directors

Tom Schlack – President
 Jerry Sharp – Vice President
 Troy Kuxhaus – Secretary
 Clarence Allen – Treasurer
 Melvin Cummings – Ellis Rae Hicks –
 Brent Ireland – Neal Livermont –
 Dean O'Neill – Wade Risse – Marion
 Schultz – Connie Whirlwind Horse –
 Donovan Young Man

Management Staff

Josh Fanning – Interim General Manager
 Sherry Bakley – Work Order and Billing
 Manager
 Anna Haynes – Finance and
 Benefits Manager
 Mike Pisha – Operations Manager
 Stacey Robinson – Member Service
 Representative Manager and Editor

Office Personnel

Tracie Hahn – Accountant II
 Amy Pisha – Right of Way Specialist
 Kasi Harris – Benefits Specialist
 Terri Gregg – Billing Specialist
 Jessica Cook – Billing Specialist
 Lisa Jensen –
 Member Service Representative
 Ashley Turgeon –
 Member Service Representative

Operations Personnel

Line Foreman: Jesse Byerley
 Journeyman Linemen:
 Dane Claussen – Ryan Pettit
 Aaron Risse – Lonny Lesmeister
 Apprentice Linemen:
 Aarin Ainsworth – Jordon Bakley –
 Tyler Brown – Alex Christensen –
 Garrett Metzinger – Brad Hahn –
 Trace Scott
 Glenn Smith – Maintenance Man
 Cody Larson – Warehouse Man

This institution is an equal opportunity provider and employer.

This publication is mailed the 15th of the month prior to the issue date. Layout is at least three weeks prior to mailing. LACREEK ELECTRIC COOPERATIVE CONNECTIONS is published monthly by Lacreek Electric Association, Inc., PO Box 220, Martin, SD 57551 for its members. Families subscribe to Lacreek Electric Cooperative Connections as part of their electric cooperative membership.

Subscription information: Electric cooperative members devote 50 cents from their monthly electric payments for a subscription. Nonmember subscriptions are available for \$12 annually. Periodicals Postage Paid at Martin, SD and at additional mailing offices.

POSTMASTER: Send address changes to: Lacreek Electric Cooperative Connections, PO Box 220, Martin, SD 57551; telephone (605) 685-6581; fax (605) 685-6957

Reprint of Official Notice of Lacreek Electric Association's 71st Annual Meeting Thursday, April 25, 2019

Bennett County High School Auditorium, Martin, S.D.

Dear Member,

Please plan to attend the 71st annual meeting of members of Lacreek Electric Association, Inc., on Thursday, April 25, 2019 at the Bennett County High School auditorium in Martin. Prizes will be given away, including one \$300 and eight \$50 grand prizes, and numerous door prizes. The annual meeting will include a meal served at the American Legion dining room.

The evening's events will include:

- 5:30 to 6:45 p.m. – Dinner served at the American Legion Dining Room
- 5:30-7 p.m. – Member Registration at Bennett County High School Auditorium
- 7 p.m. – The business meeting begins
- At meetings end – Drawing for the \$300 and eight \$50 Grand Prizes

During the meeting, five directors will be elected. The following candidates are running unopposed.

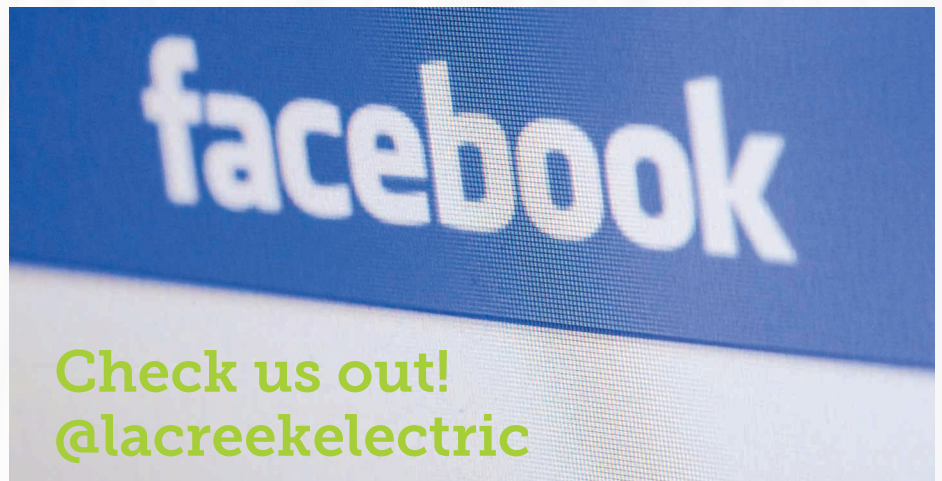
- Zone 1 – City of Martin – Scott Larson

- Zone 3 – West Bennett County – Troy Kuxhaus, incumbent
- Zone 4 – East Oglala Lakota County – Connie Whirlwind Horse, incumbent
- Zone 5 – Jackson County – Neal Livermont, incumbent
- Zone 8 – At-Large – Wade Risse, incumbent

Enclosed you will find your registration card. Please bring your registration card with you to the meeting. **Capital credit checks were mailed April 5th. They will NOT be given out at the meeting.** Your registration card will be needed to win prizes. See you there!

Respectively yours,
 Troy Kuxhaus, Secretary

**NOTE: This is a reprint of the actual Official Notice letter that was sent to each member in April. Please bring your voter's registration card with you to the annual meeting on April 25. The card was enclosed with the letter.*



High Water, High Stakes

Flooding can happen in a number of ways including river and stream overflow, excessive rain or storm surge to name a few. Floodwater contaminants can create serious fire hazards if electrical wiring and equipment have been submerged in water.

In the aftermath of a flood, there may be hidden electrical hazards. Before beginning the cleanup effort, have a qualified electrician check the house wiring, assess other damages and proceed with repair work. Then, follow these important safety tips:

- Follow any directives to turn off utilities. If you're advised to switch off the main power source to your home, flip each breaker and THEN turn off the main breaker. You may also need to shut off the main valve for your home's gas and water.
- DO NOT go near any downed power lines especially if there is standing water nearby.
- Take care when stepping into a flooded area. Be aware that submerged outlets or electrical cords may energize the water, posing a potentially lethal trap.
- Have an electrician inspect electrical appliances that have been wet and do not turn on or plug in appliances unless an electrician tells you it is safe.
- A qualified service repair dealer should examine all electrical equipment that has been wet. Certain equipment will require replacement, while a trained professional may be able to recondition other devices.
- Do not touch a circuit breaker or replace a fuse with wet hands or while standing on a wet surface. Use a dry plastic- or rubber-insulated tool to reset breakers and use only one hand. If using a wet-dry vacuum cleaner or pressure washer, follow the manufacturer's instructions.

Replace or Recondition?

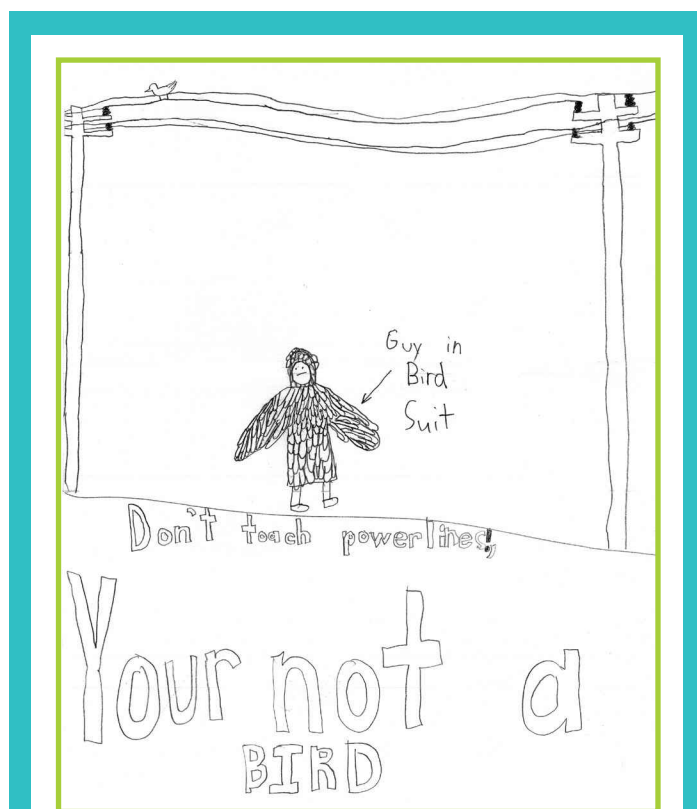
After a serious flood, some items may be reconditioned, while others will need to be completely replaced to protect you and your family. It is recommended that you allow an electrician or electrical inspector to guide the restoration or replacement of any electrical wiring or equipment. Corrosion and insulation damage can occur when water and silt get inside electrical devices and products. Water can also damage the motors in electrical appliances. Therefore, you should be prepared to replace:

- Circuit breakers and fuses
- All electrical wiring systems
- Light switches, thermostats, outlets, light fixtures, electric heaters and ceiling fans
- Furnace burner and blower motors, ignition transformers, elements and relays for furnaces and hot water tanks
- Washing machines, dryers, furnaces, heat pumps, freezers, refrigerators, dehumidifiers, vacuums, power tools, exercise equipment and similar appliances
- Electronic equipment, including computers and home entertainment systems

Source: esfi.org



KIDS CORNER SAFETY POSTER



"Don't touch power lines! You're not a bird."

Jack Bartscher, 11 years old

Jack is the son of Jon and Tanya Bartscher, Mitchell, S.D. They are members of Central Electric Cooperative, Mitchell.

Kids, send your drawing with an electrical safety tip to your local electric cooperative (address found on Page 3). If your poster is published, you'll receive a prize. All entries must include your name, age, mailing address and the names of your parents. Colored drawings are encouraged.

Comforting Casseroles

Turkey Noodle Bake

1 T. oil	Seasoning Mix, Original
1 cup chopped onion	3 cups uncooked wide egg noodles
2 (14.5 oz. each) cans diced tomatoes, undrained	2 cups shredded cooked turkey
2 cups water	1 (4 oz.) package cream cheese, cubed
1 (4.5 oz.) can chopped green chiles, undrained	2 cups shredded Mexican cheese blend, divided
1 package McCormick® Chili	

Heat oil in large saucepan on medium heat. Add onion; cook and stir 3 minutes or until tender. Stir in tomatoes, water, chiles and Seasoning Mix. Bring to boil. Remove from heat. Stir in egg noodles, turkey, cream cheese and 1 cup of the shredded cheese. Pour mixture into 9x13-inch baking dish. Cover with foil. Bake at 375°F. for 15 minutes. Remove foil. Stir mixture and sprinkle with remaining 1 cup shredded cheese. Bake, uncovered, 5 minutes longer or until cheese is melted. Let stand 5 minutes before serving. Serve with assorted toppings such as sour cream and guacamole, if desired. Makes 8 servings.

Nutritional Information Per Serving: Calories 325, Total Fat 17g, Saturated Fat 9g, Sodium 530mg, Cholesterol 93mg, Carbohydrates 23g, Protein 20g, Dietary Fiber 3g

Pictured, Cooperative Connections

Chili Pheasant Casserole

8 to 10 oz. egg noodles	1 to 2 tsp. chili powder
1/2 cup chopped raw onion	1 tsp. smoked paprika
1/2 cup chopped celery (optional)	1 cut-up cooked pheasant
1 can cream of chicken soup	1/2 cup of sour cream
1 T. fresh or dried parsley flakes	1/2 lb. of white Cheddar or Monterey Jack cheese, grated

Cook noodles in boiling water 8 minutes; drain. Combine all ingredients in a greased 3- to 4-quart casserole; stir together. Pour 1/2 cup hot water over casserole before baking. Bake at 350°F. for 40 minutes.

Laurie Wernke, Lennox, SD

Wonder Tot Casserole

3/4 lb. salmon	1/2 cup chopped celery
3/4 lb. tater rounds	1 can cream of mushroom soup
1/4 lb. American cheese	3/4 cup milk
1/2 cup chopped onion	

Put salmon and tater tots in a greased casserole, reserving a few tots for topping. In a saucepan, combine cheese, onions, celery, soup and milk; heat until cheese is melted. Pour over salmon and tater tots. Bake at 325°F. for 1 hour. Season with salt and pepper.

Deb Merkwan, Yankton, SD

Crescent-topped Cheeseburger Casserole

1 lb. lean ground beef	1/8 tsp. pepper
1/4 cup chopped onion	1-1/2 cups shredded American cheese
1/4 cup chopped dill pickles	1 (8 oz.) can refrigerated crescent rolls
1/2 cup water	1 egg, beaten
1/2 cup ketchup	1 T. sesame seed
1 T. yellow mustard	

In a 10-inch nonstick skillet, cook beef and onion over medium-high heat 5 to 7 minutes until thoroughly cooked; drain. Stir in pickles, water, ketchup, mustard and pepper. Spoon beef mixture into an 11x7-inch glass baking dish. Sprinkle with cheese. Unroll crescent dough; press into 12x8-inch rectangle. Cut into 6 squares; place on top of cheese. Brush with egg; sprinkle with sesame seed. Bake at 375°F. for 25 to 30 minutes or until deep golden brown.

Stephanie Fossum, Hudson, SD

Please send your favorite dairy, dessert or vegetarian recipes to your local electric cooperative (address found on Page 3).

Each recipe printed will be entered into a drawing for a prize in June 2019. All entries must include your name, mailing address, telephone number and cooperative name.



70th Annual Meeting of Members

April 26, 2018

The 70th Annual Meeting of the Members of Lacreek Electric Association, Incorporated, was held at the Bennett County High School Auditorium the evening of April 26, 2018, beginning at 7:00 p.m. Member Services and Procurement Manager Josh Fanning asked for the members to rise for the National Anthem whom Gage Jaeger and Katie McDonnell played with instruments and then the early bird prize was announced. The meeting was called to order by President Tom Schlack and he asked our veterans to stand and be recognized.

President Schlack called on Director Donovan Young Man who asked for a moment of silence for War Veterans and then he gave the invocation.

President Schlack reported the determination of a quorum. He also introduced the Board of Directors and said that the following directors are up for election this

year running unopposed. Zone 2 East Bennett County, Brent Ireland – Zone 4 East Oglala Lakota County, Marion Schultz – Zone 7 Cherry County, NE, Tom Schlack – Zone 9 West Oglala Lakota County, Donovan Young Man.

President Schlack called on Secretary Kuxhaus who read the Proof of Mailing of Notice of the Annual Meeting.

Secretary Kuxhaus asked if we could dispense with the reading of the minutes from the April 27th, 2017 Annual Meeting and referred to the minutes printed in the program. The members agreed, and upon motion duly made, seconded and carried, the 2017 minutes were approved.

Secretary Kuxhaus called on Treasurer Clarence Allen for the treasurer's report. Treasurer Allen gave an overview of the financial statement and stated that the actual full financial report is printed in

the program. Treasurer Allen asked for a motion and second from the members to approve the treasurer's report. A motion was made, seconded and carried to approve the treasurer's report.

President Schlack introduced General Manager Derek Sorley. Manager Sorley introduced the guests being: Vic Simmons, General Manager of Rushmore Electric Power Cooperative, Todd Eliason, Asst. General Manager of Rushmore Electric; Mike Bowers, Engineering Manager, Rushmore Electric Power Cooperative; Michael Riedman, Demonstration Coordinator of Basin Electric; Tim Grablander, General Manager of Cherry-Todd Electric and his wife Terri; Susan Two Eagle, Oglala Sioux Tribe Energy Office; Mary Wynne, Rosebud Sioux Tribe Attorney; Dan Gargan, President of Rosebud Sioux Tribe Utility Commission; Robert Schaub, Lacreek's Attorney. He also introduced



Lacreek Electric Association

Your Touchstone Energy Cooperative

Lacreek Electric Association
employees and directors
who serve you are:

Front Row: Anna Haynes, Ashley Turgeon, Lisa Jensen, Terri Gregg, Sherry Bakley, Stacey Robinson, Amy Pisha, Jessica Cook, Tracie Hahn and Kasi Harris.

Middle Row Directors: Melvin Cummings, Brent Ireland, Dean O'Neill, Connie Whirlwind Horse, Jerry Sharp, Neal Livermont, Marion Schultz, Tom Schlack, Clarence Allen, Troy Kuxhaus, Donovan Young Man and Wade Risse.

Back Row: Josh Fanning, Aaron Risse, Garrett Metzinger, Tyler Brown, Bradley Hahn, Jordan Bakley, Trace Scott, Jesse Byerley, Alex Christensen, Lonny Lesmeister, Ryan Pettit, Aarin Ainsworth, Dane Claussen, Glenn Smith, Cody Larson and Mike Pisha.

past director Jim Buckles and retired employees; Kathy Kocourek, Roland Heinert, Larry Heath and Wayne Sterkel.

Employee videos and the 2017 Washington D.C. winner video were shown.

Manager Sorley addressed the membership providing an informative power point presentation explaining the operating costs of Lacreek. He then introduced the staff and employees.

Member Services and Procurement Manager Josh Fanning announced the 2018 winner of the Washington, D.C. Youth Tour is Gage Jager. Gage is the son of Mike and Jessica Jager. Last year's winner, Rachel Ireland, gave a video overview of her 2017 trip.

Member Services and Procurement Manager Josh Fanning announced that the Basin Electric Power Cooperative and Lacreek Electric scholarship winner is Barbara Antonsen. Barbara is the daughter of Michael and Rhonda Antonsen. The two Lacreek Electric scholarship winners are Emalynn Larvie and Tate Risse. Emalynn is the daughter of

Joseph and Eleanor Larvie and Tate is the son of Wade and Bonnie Risse. President Schlack and Treasurer Allen presented the winners with a certificate.

Member Services and Procurement Manager Josh Fanning announced that each year Lacreek Electric sponsors a South Dakota Rural Electric Youth Excursion and this year's winners are Gage Jager and Katie McDonnell. Gage is the son of Mike and Jessica Jager and Katie is the daughter of David and Danielle McDonnell.

President Schlack introduced Lacreek's attorney Robert Schaub. Mr. Schaub announced that the directors ran unopposed so they remain on the board for another 3-year term.

President Schlack called for any old business. There was none.

Lacreek's attorney Robert Schaub with Schaub Law Office P.C. was called on to asking for a motion to approve the actions taken by the Board of Directors of the Association since the last Annual Meeting of the Members; with a motion made,

seconded and carried to approve the Board's actions.

President Schlack called for any new business. There was none.

President Schlack announced that any capital credit checks that were not picked up, would be mailed out in a few days.

There being no further business to come before the meeting, upon motion duly made, seconded and carried, the meeting was adjourned.

The Lacreek employees handed out prizes won by the members present at the meeting and the \$300 grand prize cash winner was Julia Garnier.

General Manager Derek Sorley gave recognition of those we have lost in the last year being past director Cleon Boomer who served 25 years and past employee Les Byrne retired after 39 years.

APPROVED:

President

Secretary



SKYWARN® weather spotter training aids volunteers in providing first-hand information to the National Weather Service.

AN EYE ON THE SKY

Spotters Play A Role in Weather Alert Process

Brenda Kleinjan

editor@sdrea.coop

Trained volunteers form a network of weather observers providing critical first-hand information for National Weather Service.

The spotters give first-hand accounts of what they are observing at ground level, an area often times obscured from what radar can detect. (Depending on the distance from the radar, that gap can extend from several hundred feet to nearly two miles.)

“Spotter reports add credibility to our warnings,” said Kelly Serr, who was conducting a training in Pierre in March. “We’re never sampling the lowest level of the storm.”

Serr kicked off the training with some basics: “This is weather spotter training, not weather chasing training. Never risk the safety of yourself or others and do your observation from a safe location.”

In most years, thunderstorms, tornadoes and lightning caused hundreds of injuries and deaths and billions in property and crop damages. To obtain critical weather information, the National Weather Service (NWS) established SKYWARN® with partner organizations. SKYWARN® is a volunteer program with between 350,000 and 400,000 trained severe weather spotters. These volunteers help keep their local communities safe by providing timely and accurate reports of severe weather to the National Weather Service. In South Dakota, several hundred volunteers attend training throughout the spring each year.

Although SKYWARN® spotters provide essential information



Clouds form a backdrop to a power line in northeastern South Dakota.

Photo by: Northern Electric Cooperative member C.J. Lane

for all types of weather hazards, the main responsibility of a SKYWARN® spotter is to identify and describe severe local storms. In an average year, the United States experiences more than 10,000 severe thunderstorms, 5,000 floods and more than 1,000 tornadoes.

Since the program started in the 1970s, the information provided by SKYWARN® spotters, coupled with Doppler radar technology, improved satellite and other data, has enabled NWS to issue more timely and accurate warnings for tornadoes, severe thunderstorms and flash floods.

Who is eligible and how do I get started?

NWS encourages anyone with an interest in public service to join the SKYWARN® program. Training is free and typically lasts about two hours. Volunteers learn:

- Basics of thunderstorm development
- Fundamentals of storm structure
- Identifying potential severe weather features
- Information to report
- How to report information
- Basic severe weather safety

Weather Spotter Class

While many training classes were held in March and April, a few are still being offered in South Dakota through May:

Wednesday, April 17, 7 p.m. – Bon Homme County Spotter Class, Avon Fire Hall, 106 E 1st Ave.

Thursday, April 18, 7 p.m. – Lebanon, S.D. Community Center

Thursday, April 18, 7 p.m. – Clay County, S.D., Spotter Class, Vermillion, S.D., High School

Friday, April 19, 1 p.m. – Custer Highlands/Elk Mountain, Elk Mountain School, 10222 Valley Rd, Dewey, S.D.

Monday, April 22, 7 p.m. – Clark, S.D., Community Center, 120 N Commercial St

Monday, April 22, 7 p.m. – Douglas County Spotter Class, 4-H Building, 408 9th St, Armour, S.D.

Thursday, April 25, 7 p.m. – Lake/Moody County Spotter Class, East River Electric Power Cooperative, 211 Harth Ave S, Madison, S.D.

Monday, April 29, 7 p.m. – Minnehaha County Spotter Class, Washington Pavilion, 301 S Main Ave, Sioux Falls

Wednesday, May 1, 6 p.m., Murdo, S.D., Ambulance Shed, 101 N Main

Wednesday, May 1, 7 p.m. – Yankton County Spotter Class, 201 W 23rd St, Yankton, S.D.

Online spotter training available: The Cooperative Operational Meteorology Education and Training (COMET) offers an online Skywarn® Spotter Training course in two sections: "Role of the Skywarn® Spotter" and "Skywarn® Spotter Convective Basics". The course is designed for people interested in becoming storm spotters. The course is free and each section takes one to two hours to complete.

Weather Ready

Aberdeen Weather Team Aims to Improve Preparedness and Response

by Ben Dunsmoor

The Aberdeen office of the National Weather Service is bringing together emergency managers, broadcast media, transportation officials, and private sector organizations – including electric cooperatives – to prepare for severe weather events. Officials with the office in Aberdeen held the second annual Integrated Weather Team (IWT) workshop on March 20 to improve communication and coordination between these groups.

"The IWT is an ad-hoc 'team' of people and entities who are involved in the preparedness and response to high-impact weather events," NWS Aberdeen Warning Coordination Meteorologist Kelly Serr said.

The goal of the annual one-day workshop is to meet with organizations and discuss best practices and methods to improve communication with the public before, during, and after a severe or high-impact weather event.

According to Serr, the IWT is a nationwide initiative led by the National Weather Service. The weather service offices in Sioux Falls and Rapid City have held similar events, but the Aberdeen office is the first in South Dakota that is meeting every year.

"The IWT philosophy was born out of the desire to bring together those involved in the weather warning and public safety process," Serr said. "The vision of the workshop is to better understand each group's role in public safety, expectations, and how each IWT member can work together toward mutual goals."

Northern Electric Cooperative Communications Director Ben Dunsmoor and retired Operations Manager Mike Kelly presented information during the March 20 workshop about a mid-October winter storm that caused widespread power outages. The information was intended to help the National Weather Service, emergency managers, and those attending the workshop understand the weather conditions that cause power outages.

"My hope is that we continue to learn from each other, understand each other's strengths and weaknesses and make central and northeast South Dakota as ready, responsive and resilient as possible," Serr said.

More than 30 people attended the March 20 workshop.



About 30 people attended Integrated Weather Training in Aberdeen in March.

In Memory...

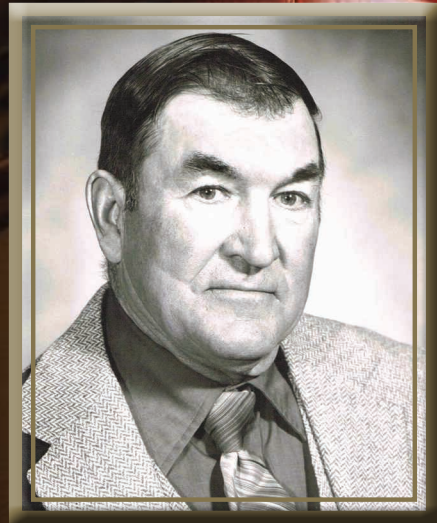
Ellis Rae Hicks

Oct. 21, 1927-Nov. 15, 2018

Ellis Rae Hicks, 91, passed away on Nov. 15, 2018. Ellis Rae was a Board of Director (Zone 1- City of Martin) for Lacreek Electric Association Inc. from 1989 to the time of his death. During that time, he served as the president from 1995-1997, as vice president from 1992-1995, 2005-2007, 2014-2015, and as treasurer from 2002-2004. ER took his responsibility as a board of director very serious and his leadership will be greatly missed. He always had a smile on his face and took the time to visit with the employees when he came into the office. He was respected and liked by the directors, staff and employees of Lacreek. His time served on the board was one of dedication to the success of Lacreek and he will be remembered as a loyal board of director at Lacreek Electric.

Ellis Rae was born in Martin, S.D., on Oct. 21, 1927, to Ellis Roy and Dolores (Wordeman) Hicks. He was the oldest of six children. He attended elementary school at Little White River School. Ellis rode horseback 3 miles to school. There were 36 pupils in a one room school. He shared a desk with an eighth grader. There were not enough desks for all the kids. He graduated from Bennett County High School in Martin in 1946. Ellis Rae married Dorothy Mae Kuxhaus on June 25, 1950, the day the Korean War started. He enjoyed telling people two wars started that day and one is still going on. He enlisted in the United States Air Force in December 1950 and was Honorably discharged in 1953. He came back to the ranch life he loved. On May 29, 1956, E.R. and Dorothy were blessed with a son, Scott. In 1962 they opened a clothing store in Martin which they operated for 32 years. Ellis Rae dearly loved his family, his home and his community. He officiated high school basketball, was a Commercial Club member and served as their president. He was a member of American Legion Post 240 for 64 years and also served as Post Commander and Adjutant. He served on the city council and was mayor at one time. He was a Martin Volunteer Fireman for 19 years. He served on the Church Council at Our Redeemers Lutheran Church. He was a supporter of the Martin Community Heritage Center. Over the years he also sold John Hancock Insurance and was a salesperson for the MoorMan's Feed Company.

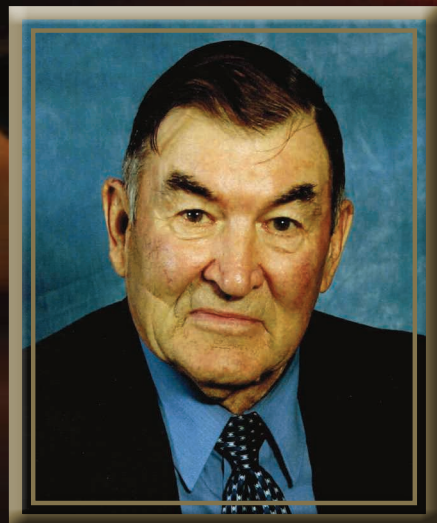
Ellis Rae is survived by his wife, Dorothy, of 68 years; son Scott and daughter-in-law Anita; grandsons, Thad of New Orleans, La., and Drew of Sioux Falls, S.D.; two granddaughters, Tara (Josh) Fanning and Kyla (Gary) Alexander both of Martin, S.D.; and four great-granddaughters: Eden and Aris Fanning, Zoe and Avery Alexander, his loving sister, Dorothy Bradford; brother, Glenn (Berdella) Hicks, and a host of nieces, nephews and cousins, who were all very special to him.



Ellis Rae (ER) Hicks

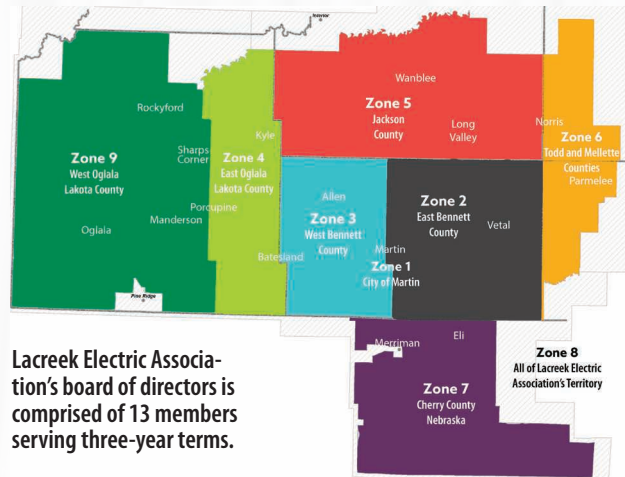
October 21, 1927-
November 15, 2018

Lacreek Electric Association
Director, 1989-2018



Five Members Seek Lacreek Director Seats

Members attending the 2019 Lacreek Electric Association annual meeting will elect directors to represent Zones 1, 3, 4, 5, and 8 for three-year terms. The following individuals have filed petitions to run for these positions. The following are brief biographical information on each of the candidates.



Lacreek Electric Association's board of directors is comprised of 13 members serving three-year terms.

Zone 1 – City of Martin

Scott Larson – Scott was born in Pierre, S.D., and raised in Martin, S.D. He graduated from Bennett County High School in 1987, attended Mitchell Vo-Tech, and in 1989, joined the United States Army. That same year, he married Carrie, also a Martin local, and they now have two grown sons. After serving in the Gulf War, Scott focused his profession in the building trades and has owned his own residential construction company for over 24 years. Scott also continued his education through the University of South Dakota. He has served as Martin City Foreman, Martin Code Enforcement Officer, and spent five years as city councilman. He also served as American Legion Post 240 Commander for four years. Over the years, Scott has coached American Legion Baseball, flag football, AAU wrestling and was an assistant coach for high school wrestling. He enjoys his job, hunting and fishing, friends and family and loves life enough to smile infectious.



Scott Larson
Zone 1
Candidate

Zone 3 – West Bennett County

Troy Kuxhaus – He has been a lifelong resident of Bennett County. He was born in 1969, graduated high school at Bennett County in 1987, graduated from Western Dakota Tech in 1989 as a certified welder. In 1990, he married Amie, also a local resident, and they have two children, (Keven and Colin). They reside on the family farm west of Martin that he owns and operates. He is the third generation Kuxhaus to run the family farm. Troy has served on Lacreek Electric's board since 2013. He served on the FSA board for nine years. He is a member of the Batesland Volunteer Fire Department. Hobbies include friends, and family ventures of hunting, fishing and vacations. Troy has served on Lacreek Electric's board since 2013.



Troy Kuxhaus
Board Secretary
Zone 3, 2016-19

Zone 4 – East Oglala Lakota County

Connie Whirlwind Horse – Connie attended school at Holy Rosary Mission (now Red Cloud) and then attended one year of college at Black Hills State. She and her late husband, Louis, ranched near Kyle for many years. She is the mother of nine children and continues to run the ranch. She has served on the Oglala Lakota County Commission and serves on the Medicine Root District Enrollment Committee, is currently the Chairperson of the Kyle Senior Citizens Program and serves on the Pejuta Huta Oyanke Development Corporation Board. Connie has served on Lacreek's board since 1994.



Connie Whirlwind Horse
Director, Zone 4
2016-19

Zone 5 – Jackson County

Neal Livermont – Neal is the son of Butch and Judy Livermont. He grew up on, and continues to operate, the Livermont Ranch southeast of Interior. Neal is married to Dana and together they share four daughters. Neal was a member of the band Country Rush for 20 years before retiring in 2014. He currently serves on the board of the Jackson County FSA, the Oglala Lakota livestock and land owner association and the Interior Roping Club. Neal has served on Lacreek's board since 2016.



Neal Livermont
Director, Zone 5
2016-19

Zone 9 – West Oglala Lakota County

Wade Risse – Wade graduated from Bennett County High School in 1986. In 1994, he married his wife, Bonnie, and now they have three daughters and one son who all attend Bennett County Schools. He ranches and raises angus cattle in the Risse Half Box V family ranch operation. He has served on the Bennett County Fair Board and St. Martin's Knights of Columbus Council for a number of years. Wade has served on Lacreek Electric's board since 2013.



Wade Risse
Director, Zone 8
2016-19

Fun Rolls into Huron

Wheel Jam Celebrates Two, Four and 18 Wheels – and more

Brenda Kleinjan

editor@sdrea.coop

More than 40 competitors are also expected for the South Dakota BBQ Championships.

Whether two wheels, four wheels or 18 wheels, vehicles of all types will be rolling into Huron May 31-June 2 for the 16th annual Wheel Jam.

The celebration of transportation takes place on the South Dakota State Fair Grounds and will include the 13th annual Original South Dakota BBQ Championships cook off as well as musical entertainment.

Organizers of the event note, “When semi-trucks, classic cars, motorcycles, stock car races, and a few rock and roll bands all get together, it means one awesome weekend for the state of South Dakota!”

Between the concurrent shows for big rigs, cars and pickups and motorcycles, visitors to Wheel Jam will see thousands of gleaming wheels. They can also watch (or be in) the BIG RIGS run in the Dynamic Engine Brake Competition, listen to



A truck in the 2017 Wheel Jam Dynamic Engine Brake Competition gives the course a run.



classic rock bands in South Dakota or just sit back and enjoy the weekend on the South Dakota State Fair Grounds.

Smokin' hot wheels won't be the only

Wheel Jam Schedule

Poker Run

Friday, May 31 • 6 p.m. to 9 p.m. • Registration: 5 p.m. at Red Arrow Bar – A free will offering meal will be served during registration. The poker run is open to all vehicles. Entry fee: \$10. The entry fee includes admission into the Big Jim Jam Fest.

Pick-Up Party

Saturday, June 1 • Registration from 9 a.m. to noon; show from noon to 4 p.m. • Awards at 4 p.m.

Come to Wheel Jam and bring your 25+ year old pickup – in any stage of repair or dis-repair. No fee to park in designated area! We will be giving trophies for the pickup that is the ugliest, best of show, and came the furthest. Come park your pickup, set up your camper/lawn chair and set back and enjoy the fun!

Make It Mine Show-n-Shine (Classic cars/motorcycles)

Saturday, June 1 • Registration from 9 a.m. to noon; show from noon to 4 p.m. • Awards at 4 p.m.

There is no entry fee to participate in the Make it Mine Show n' Shine. Vehicles do not have to be in a "judged car show" condition. Winners are chosen by trophy sponsors. Each sponsor will choose from cars and bikes to award its trophy to. There is no criteria to follow. The winner is chosen based on the sponsor's preference.

11th Annual Midwest SPL Sound Competition

Saturday, June 1 • Registration from 10 a.m.-11 a.m. • Qualifying Time: 11 a.m.

JM & TEAM FLEXICUTION presents the 11th annual Midwest SPL Sound Competition located in the Hippodrome.

Wheel Jam Parade

Saturday, June 1 • 10:30 a.m. • Participants line-up on Market Street starting at 9 a.m. – All wheels are welcome to participate!

Parade route: Market St. east to Dakota Ave. south to 21st St. and back around to the fairgrounds.

Dynamic Engine Brake Competition

Saturday, June 1 • 1 p.m. • Located on Nevada Ave. between Market St. and Gate 3

Biker Games

Saturday, June 1 • 6 p.m. • East side of carnival mat

Wheel Jam Truck Show Light Show

Saturday, June 1 • Dusk • Located in West Machinery

Trucks will tune into Big Jim 93.3 from 10 pm - 11 pm for Saturday Night Rockin' Lights w/ Wheel Jam Truck Show Light Show.

Backstreet Cruisers Car Show

Sunday, June 2 • Registration Time: 9 a.m. to noon • Show Time: 12 p.m. to 4 p.m.

Windriders ABATE Motorcycle Show

Sunday, June 2 • Registration: 9 a.m. to noon • Show from noon to 4 p.m. • Family Living Center



The Wheel Jam Parade takes to the streets of Huron on June 1.

feature of the weekend as grilling maestros light up their grills to compete in the Original SD BBQ Championships. The event began in 2007 and is a Kansas City BBQ Society sanctioned event. Each year, more than 40 teams compete in the event, which offers more than \$14,000 in total KCBS purse. The grand champion wins \$2,500 as well as an invitation to compete at the prestigious American Royal in Kansas City, Mo. The Reserve Grand Champion pockets \$2,000 in the competition.

The event also features the Backyard BBQ People's Choice Competition, which is open to anyone. Participants do not have to compete in the KCBS portion of the event to register for the Backyard BBQ Competition.

And for chili lovers, there's the F.A.T. Friday Chili Challenge on Friday, May 31. The people's choice public tasting is held from 5:30 p.m. to 7 p.m.

For more information on the BBQ, visit <http://www.sdbbqchampionships.com/>

Learn more about Wheel Jam at <http://www.wheeljam.com/> or by calling the South Dakota State Fair office at 800-529-0900 or 605-353-7340.



Above: The Wheel Jam Truck Show Light Show illuminates the evening on Saturday. Right: Cars of all types will be on display during Wheel Jam.



Balance Sheet

(as of December 2018)

ASSETS	2017	2018
ELECTRIC PLANT:		
In Service	\$60,880,389	\$63,384,639
Under Construction	\$3,060,024	\$3,443,898
Total Electric Plant	\$63,940,413	\$66,828,537
Less Accumulated Depreciation	\$(24,576,630)	\$(25,427,070)
Electric Plant - Net	\$39,363,783	\$41,401,467
OTHER PROPERTY AND INVESTMENTS:		
Investments in associated organizations	\$6,598,751	\$7,506,617
Other Investments	\$134,968	\$149,684
Total Other Property and Investments	\$6,733,719	\$7,656,301
CURRENT ASSETS:		
Cash and cash equivalents	\$639,832	\$1,022,395
Temporary cash investments	\$0	\$2,500,000
Account receivable, less allowance for uncollectible accounts	\$1,484,688	\$1,422,134
Material and Supplies	\$1,124,598	\$841,314
Prepayments	\$72,615	\$69,606
Interest receivable	\$2,684	\$3,994
Total current assets	\$3,324,417	\$5,859,443
Deferred Debits	\$491,425	\$393,151
TOTAL ASSETS	\$49,913,344	\$55,310,362
EQUITIES & LIABILITIES:	2017	2018
EQUITIES		
Patronage capital	\$17,509,952	\$18,450,323
Other Equities	\$3,008,255	\$3,462,607
Total Equities	\$20,518,207	\$21,912,930
LONG-TERM DEBT, Less		
CURRENT MATURITIES	\$25,856,413	\$29,927,454
CURRENT LIABILITIES:		
Current maturities long-term debt	\$1,185,000	\$1,275,000
Accounts payable	\$1,029,101	\$898,103
Member deposits	\$491,445	\$490,110
Taxes accrued	\$203,589	\$190,915
Other current liabilities	\$237,145	\$253,382
Total Current Liabilities	\$3,146,280	\$3,107,510
DEFERRED CREDITS		
Members' energy payments	\$142,444	\$112,468
Electric revenue deferral	\$250,000	\$250,000
Total Deferred Credits	\$392,444	\$362,468
TOTAL EQUITIES & LIABILITIES	\$49,913,344	\$55,310,362

2018 Year End Statistics

Year Energized.....	1948
Plant	\$66,828,537
Equity	39.62%
Service Area	5,174
Total Miles of Line	3,160
Miles Transmission	204
Miles Distribution.....	2,682
Miles Underground	274
Meters per Miles.....	2.11

Number of Meters.....	6,673
Average Monthly Usage, Residence.....	1,335
Number of Electric Heat Homes.....	894
Number of Irrigation Systems	132
Number Of Directors	13
Number of Members.....	4,180
Number of Employees.....	27
Number of Security Lights	3,652

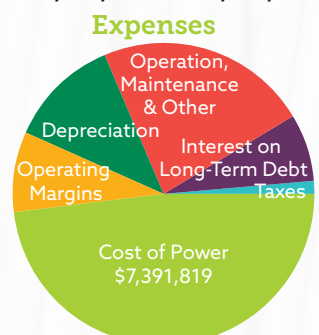
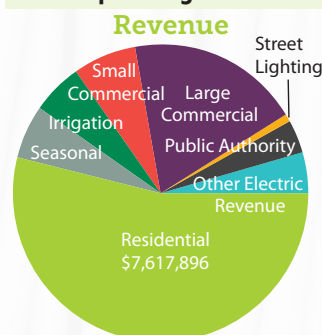
Kwh Sales.....	126,141,345
Revenue per Kwh	
Residential	\$0.1040
Winter Demand.....	29,917
Summer Demand	19,470

Counties Served: Bennett, Jackson, Oglala Lakota, Todd and Mellette in South Dakota and Cherry in Nebraska.

Statement of Operations

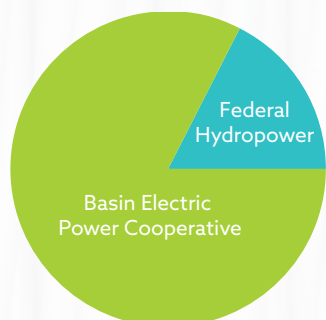
(Year Ending December 2018)

	2017	2018
OPERATING REVENUES		
Electric	\$13,103,859	\$13,495,613
Other	\$1,008,905	\$625,428
Total Operating Revenues	\$14,112,764	\$14,121,041



OPERATING EXPENSES		
Cost of Power	\$7,614,266	\$7,391,819
Transmission	\$96,520	\$60,257
Distribution - Operations	\$486,192	\$711,928
Distribution - Maintenance	\$887,414	\$822,162
Member Accounts	\$504,055	\$522,026
Member Service & Information	\$85,553	\$93,629
Administrative & General	\$1,251,284	\$1,243,280
Depreciation	\$1,670,298	\$1,807,261
Taxes	\$183,752	\$191,564
Interest on Long-term Debt	\$1,074,935	\$1,120,830
Other Deductions	\$13,590	\$20,396
Total Operating Expenses	\$13,867,859	\$13,985,152
Operating Margin Before Capital Credits	\$244,905	\$135,889
Generation & Transmission Capital Credits	\$404,632	\$1,184,640
NET OPERATING MARGIN	\$649,537	\$1,320,529
NON-OPERATING MARGIN		
Merchandising, less costs & expenses	\$12,402	\$9,024
Gain on disposal of assets	\$67,384	\$17,642
Other Cooperative Capital Credits	\$78,255	\$85,341
Interest Income	\$241,671	\$271,698
Total Non-Operating Margin	\$399,712	\$383,705
NET MARGIN	\$1,049,249	\$1,704,234

Explanation of 2018 Dollars Spent



COST OF POWER – This is paid to Rushmore Electric Power Cooperative, our power supplier, which receives 84.62 percent from Basin Electric [which consists of a blend of coal, hydro, nuclear, natural gas, renewables (wind and waste heat)] and 15.67 percent hydropower.

TAXES – This includes real estate taxes and 2 percent rural electric kilowatt hour tax in South Dakota and property taxes in Nebraska.

INTEREST – Monies paid to Rural Utilities Service and Cooperative Finance Corporation for interest on our loans.

DEPRECIATION – The value of the property of the cooperative is set up to decrease annually over a set period of time.

MARGINS – Revenue over and above the cost of operation. Margins are assigned to the members in the form of patronage capital or capital credits.

OPERATIONS

MAINTENANCE and OTHER

– Includes the cost of maintaining 3,160 miles of line, more than 3,652 security lights, billing approximately 6,673 meters a month plus insurance, transmission expense, sales expense, customer service expense and other costs required to operate the cooperative.

71st Annual Meeting PROGRAM

April 25, 2019

Agenda

Registration Begins.....	5:30 p.m.
Drawing for Early Attendance Prize	7 p.m.
Call to Order.....	President Tom Schlack
Invocation	Donovan Young Man
Determination of Quorum	
Introduction of Directors.....	President Schlack
Reports	
■ Secretary	Troy Kuxhaus
■ Proof of Mailing of Notice of Meeting	
■ Minutes of Previous Meeting	
■ Treasurer	Clarence Allen
Introduction of Guests	
Recognition of those we have lost in the last year.	
■ Ellis Rae Hicks – Served 30 years	
Manager's Report	Interim General Manager Josh Fanning
Election of Directors.....	Robert Schaub, Attorney
Washington, D.C., Youth Tour Video	Gage Jager – Video
Scholarship Presentation	
Youth Excursion Winners	President Schlack
Old Business	
New Business	
Adjournment	
Drawing for Prizes and Grand Prizes.....	<i>All Winners Must Be Present</i>



Find Your Account

A member's account number has been hidden somewhere in this newsletter. If you find your account number, call the office before May 5 and you will receive a \$110 credit on your next month's billing.

If no one finds their account number, the credit will be \$120 in the next issue.

April 27

River Rat Marathon, Yankton, SD, 605-660-9483

April 27-28

Annual JazzCrawl, Sioux Falls, SD, 605-335-6101

May 1-5

Black Hills Film Festival, Hill City, SD, 605-574-9454

May 17-19

State Parks Open House and Free Fishing Weekend, Pierre, SD, 605-773-3391

May 17-19

Sound of Silence Tesla Rally, Custer, SD, 605-673-2244

May 24-26

Annual Off Road Rally, Sturgis, SD, 605-720-0800

May 24-26

South Dakota Kayak Challenge, Yankton, SD, 605-864-9011

May 25-26

Annual SDRA Foothills Rodeo, Wessington Springs, SD, 605-770-4370

May 30-June 1

Senior Games, Sioux Falls, SD, Contact Nick Brady at 605-978-6924

May 31-June 1

South Dakota BBQ Championships, Huron, SD, 605-353-7354

May 31-June 1

Pork Palooza, Sioux Falls, SD, garrett@agemedia.pub

May 31-June 2

Wheel Jam, Huron, SD, 605-353-7340

May 31-June 3

Fish Days, Lake Andes, SD, 605-487-7694



May 31-June 2: Fort Sisseton Historical Festival, Lake City, SD, 605-448-5474

June 1

Dairy Fest, Brookings, SD, 605-692-7539

June 1

Annual Casey Tibbs Match of Champions, Fort Pierre, SD, 605-494-1094

June 1-2

Spring Volksmarch, Crazy Horse, SD, 605-673-4681

June 2

Mickelson Trail Marathon, Deadwood, SD, 605-578-1876

June 2-8

Ride Across South Dakota (RASDAK), Rapid City, SD, rasdakbiketour@gmail.com

June 2-August 11

Annual Red Cloud Indian Art Show, Pine Ridge, SD, 605-867-8257

June 6-9

South Dakota Shakespeare Festival, Vermillion, SD, 605-622-0423

June 7

East of Westville with Kenny Putnam Kiwanis Club Concert, 7 p.m., Riggs Theatre, Pierre, SD, 605-280-0818

June 7-8

Senior Games, Spearfish, SD, Contact Brett Rauterkus at 605-722-1430

June 7-9

Annual Black Hills Quilt Show & Sale, Rapid City, SD, 605-394-4115

June 8

Train Day, Redfield, SD, 605-472-4566

June 8-9

Siouxland Renaissance Festival, Sioux Falls, SD, 1-866-489-9241

June 13-15

Czech Days, Tabor, SD, 605-463-2478, www.taborczechdays.com, taborczechdays@gmail.com

June 21

Dalesburg Midsummer Festival, Dalesburg Lutheran Church, Rural Vermillion, SD, 605-253-2575

June 28-29

Senior Games, Madison, SD, Contact Bernie Schuurmans at 605-270-3327

June 29

Rhubarb Festival, Leola, SD, 605-824-0014

To have your event listed on this page, send complete information, including date, event, place and contact to your local electric cooperative. Include your name, address and daytime telephone number. Information must be submitted at least eight weeks prior to your event. Please call ahead to confirm date, time and location of event.